



  
**DESERT  
QUIVER CAMP**  
GATEWAY TO SOSSUSVLEI  
*Self-catering Excellence  
at the edge of the Namib*



**Desert Quiver Camp** uniquely combines modern self-catering accommodation with comfort and style. Conveniently located 5km from the entrance to Sossusvlei, the inspiring scenery characterised by granite outcrops, spectacular views and roaming wildlife, will captivate your senses.

## GENERAL INFORMATION

Established in 2015, Desert Quiver Camp is situated on a 40 000 hectare private reserve, a mere 5 kilometres away from Sossusvlei Lodge which lies directly adjacent to the Sesriem gate of the Namib Naukluft Park - sanctuary to the highest sand dunes found in the oldest desert in the world.

## LOCATION

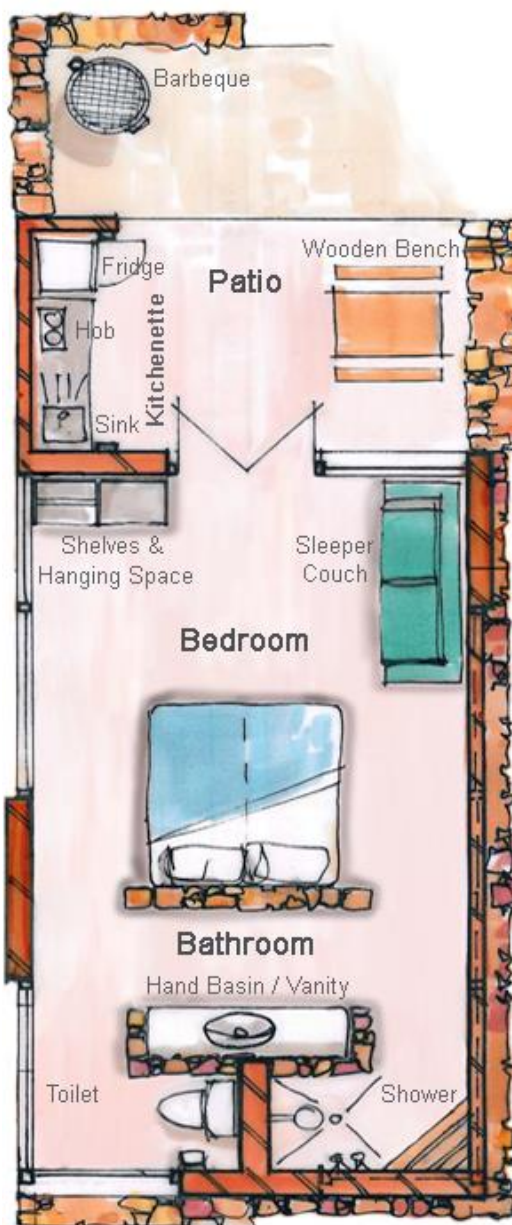
Desert Quiver Camp is situated on the C19, 5 km from the entrance gate to the famous Sossusvlei and Sesriem Canyon. (Southern Namibia).

## ACCOMMODATION

Twenty Four uniquely designed en-suite self-catering chalets with private parking available.

Each twin-bedded accommodation unit has air-conditioning, an en-suite bathroom and a spacious bedroom with a fold-out sleeper couch where two small children (under12) can be accommodated free of charge if shared with two paying adults.

The units are also equipped with a veranda, barbeque facility, wooden bench and kitchenette, which feature a two plate stove, under counter fridge and wash up area.



## MEALS

**Desert Quiver Camp** is a self-catering establishment and offers the following services to make your stay as comfortable as possible:

"Utility boxes" filled with most cooking- and eating utensils are available at reception. Fresh food supplies can be ordered daily.

For larger groups traveling together, 2 self-catering communal bomas with cooking and wash up facilities are provided and can be booked with reservations.

Lastly for those that do not wish to cook while on holiday, all meals can be booked at the nearby Sossusvlei Lodge.

## FACILITIES

- o Bar with big-screen television
- o Sparkling Swimming pool overlooking the breath taking grasslands and Elim Dune
- o 2 Communal bomas with cooking and wash-up facilities
- o Wi-Fi reception at main building (coupons at reception)
- o Food to order for self-catering (forms available at reception)

Facilities available at the nearby Sossus Oasis include:

- o Shop
- o Internet café
- o Wi-Fi availability (coupons at shop)
- o Fuel and service station

Facilities available at the nearby Sossusvlei Lodge include:

- Restaurant
- Al fresco terrace
- Floodlit waterhole
- Bar and Sundowner Deck
- Beer garden
- Curio shop
- Swimming pool
- Conference centre
- Adventure centre
- Outdoor catering and functions on request

### ACTIVITIES

Activities that can be booked at the Sossusvlei Lodge Adventure Centre:

- Guided Sossusvlei excursions
- Sun-downer trips
- Quad Buggy Nature Drives
- Bush dinners
- Guided Elim Dune Walks
- Archery
- Hot air ballooning
- Helicopter Flights
- Indoor and outdoor conferencing
- Scenic flights
- Charter- and air taxi flights

### DISTANCE

750km from Etosha Village and approximately 330km from Windhoek, 360km from Swakopmund, 506km from Lüderitz and 5km away from Sossusvlei Lodge on the 40 000ha private reserve.

### SOSSUSVLEI LANDING STRIP

Coordinates S24°29'22" E015°48'55", elev. 762m (2500'), rwy. 31/13, 1200m (3937')  
Compacted gravel; radio freq. 124.8MHz; Avgas refuelling and ablution facilities available.

### MAP



GPS Coordinates: S 24°29' 14.2" E 15°50' 25.9"

### SEASONS

Low season:  
1 December - 30 June excluding 24, 25 and 31 December

High season:  
1 - 30 November and 1 July - 31 October including 24, 25 and 31 December

### CHILD POLICY

Two children under 12 years shall be accommodated free of charge, on the fold-out sleeper couch, if accompanying and sharing a room with 2 full paying adults (subject to availability).

### CREDIT CARDS

Master and Visa credit cards are welcome.

### OWNERS

Taleni Africa Tourism Holdings (Pty) Ltd

### GENERAL MANAGER

Karl-Heinz Oosthuizen

### RESERVATIONS

#### Central Reservations Office

Tel: +27 21 930 4564  
Fax: +27 21 914 9930

Email: [reservations@desertquivercamp.com](mailto:reservations@desertquivercamp.com)

Address: P.O. Box 5798, Tygervalley, 7536  
Cape Town - South Africa

### DIRECT DEPOSIT BANKING DETAILS

Bank: First National Bank  
Branch Code: 281872 (FNB Business Branch)  
Account Name: Taleni Africa t/a Sossusvlei Lodge  
Account Number: 555 100 555 66

Enter the Booking Number on the deposit slip and fax confirmation of deposit to +27 21 914 9930.

## TERMS AND CONDITIONS

Quoted rates may change without prior notice should government taxes, fuel prices and other fees increase drastically and unexpectedly. Please confirm all rates.

- All quoted rates are in Namibian Dollars and are inclusive of 15% VAT
- Rates, where stated, are nett and are non-commissionable.
- Rates are quoted per room per night.
- Meals taken at Sossusvlei Lodge can be added to the booking.
- Tariffs quoted are subject to change without prior notice.

- Private reservations will only be regarded as "confirmed" once the stipulated deposit has been received.
- Taleni Africa reserves the right to release a reservation if the due deposit is not received in full by the stipulated deposit due date.

The following cancellation policy applies to all reservations:

Cancellation period: Cancellation fee  
16 to 30 days prior to arrival: 50%  
11 to 15 days prior to arrival: 75%  
<10 days prior to arrival: 100%  
Non-arrivals: 100%

Tour Operators should contact the Central Reservations Office regarding details of registration.

## DESERT QUIVER CAMP CONTACT DETAILS

Tel: +264 63 293 611

E-mail: [info@desertquivercamp.com](mailto:info@desertquivercamp.com)

PO Box 6900, Ausspannplatz, Windhoek – Namibia

[www.desertquivercamp.com](http://www.desertquivercamp.com)

