



Self-catering at its Best amidst unparalleled Desert Beauty...



www.desertcamp.com

Desert Camp is situated only 5 km from the entrance gate to Sossusvlei and Sesriem Canyon in the Namib Naukluft Park. Nestled under centuries old thorn trees, Desert Camp has an unsurpassed 360 degree view over the desert landscape and surrounding mountains. An absolute must for the nature lover and photographer.

For groups traveling together, 2 self-catering communal bomas with cooking and wash up facilities is provided and can be booked with reservations. Facilities at the main building also include a fully stocked bar with a big screen television and a sparkling swimming pool.

GENERAL INFORMATION

Established in 2006, Desert Camp is situated on a 40 000 hectare private reserve, a mere 5 kilometres away from Sossusvlei Lodge which lies directly adjacent to the Sesriem gate of the Namib Naukluft Park - sanctuary to the highest sand dunes found in the oldest desert in the world.

LOCATION

Southern Namibia, amidst the Namib Desert. Near the entrance gate to the famous Sossusvlei and Sesriem Canyon.

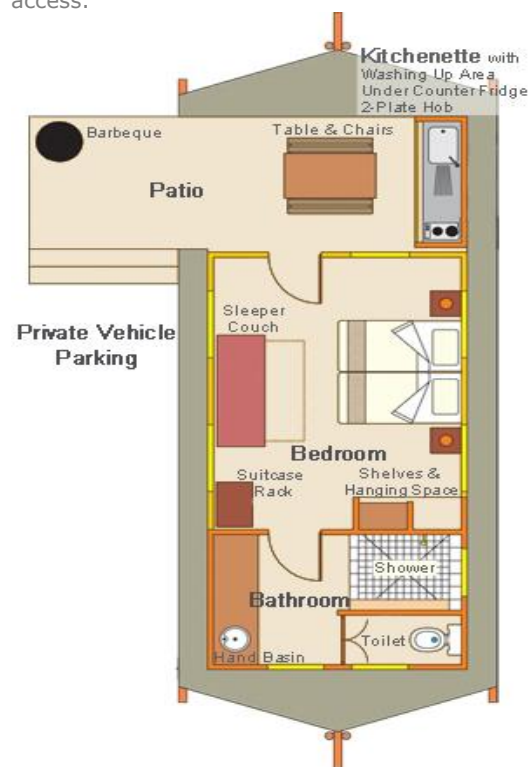
ACCOMMODATION

Twenty separate en-suite self-catering units under canvas with adobe-style walls are available.

Each twin-bedded accommodation unit has an en-suite bathroom equipped with a shower, toilet and wash-basin, and a spacious bedroom with a fold-out sleeper couch where two small children (under12) can be accommodated free of charge if

shared with two paying adults. The units are also equipped with a shaded veranda, barbeque facility, wooden bench and kitchenette, which feature a two plate stove, under counter fridge and wash up area. "Ammo boxes" filled with most cooking- and eating utensils are available at reception. Fresh food supplies can be ordered daily.

The two wheelchair friendly units are accessible from a cemented path, have no steps and have been fitted with handles in the bathroom for easy access.



DISTANCE

Desert Camp is a self-catering establishment and offers the following services to make your stay as comfortable as possible:

"Utility boxes" filled with most cooking- and eating utensils are available at reception. Fresh food supplies can be ordered daily.

For larger groups traveling together, 2 self-catering communal bomas with cooking and wash up facilities are provided and can be booked with reservations.

Lastly for those that do not wish to cook while on holiday, all meals can be booked at the nearby Sossusvlei Lodge.

FACILITIES

- Bar with big-screen television
- Swimming pool
- 2 Communal bomas with cooking and wash-up facilities
- Wi-Fi reception at main building (coupons at reception)
- Food to order for self-catering (forms available at reception)
- Private chef to prepare meals over coals on request

Facilities available at the nearby Sossus Oasis include:

- Shop
- Internet café
- Wi-Fi availability (coupons at shop)
- Fuel and service station



Facilities available at the nearby Sossusvlei Lodge include:

- o Restaurant
- o Alfresco terrace
- o Floodlit waterhole
- o Bar and Beer garden
- o Curio shop
- o Swimming pool

- o Conference centre
- o Lounge
- o Adventure centre
- o Outdoor catering and functions on request

DISTANCE

750km from Etosha Village and approximately 330km from Windhoek, 360km from Swakopmund, 506km from Lüderitz and 5km away from Sossusvlei Lodge on the 40 000ha private reserve.

ACCESS

Self-drive: Well-maintained gravel roads from C19 or C27 (Accessible with all vehicles – not only for 4x4 vehicles)

Via air: Approximate 1 hour flight from Windhoek, Swakopmund or Walvis Bay.

SOSSUSVLEI LANDING STRIP

Coordinates S24°29'22" E015°48'55", elev. 762m (2500'), rwy. 31/13, 1200m (3937')
 Compacted gravel; radio freq. 124.8MHz; Avgas refuelling and ablution facilities available.

MAP



GPS Coordinates: S24°28' 57.7" E015°50' 02.2"

ACTIVITIES

Activities that can be booked at the Sossusvlei Lodge Adventure Centre:

- o Guided Sossusvlei trips
- o Sundowner trips by 4x4 and quad
- o Bush dinners
- o Guided sunset walks
- o Archery
- o Helicopter flights
- o Hot air ballooning
- o Indoor and outdoor conferencing
- o Scenic flights
- o Charter- and air taxi flights

SEASONS

Low season:
 1 December - 30 June excluding 24, 25 and 31 December

High season:
 1 - 30 November and 1 July - 31 October including 24, 25 and 31 December

AWARDS

Desert Camp won several Awards of Excellence in the various categories by the Hospitality Association of Namibia.

TripAdvisor has awarded Desert Camp with a Certificate of Excellence for constantly attaining high ratings from guest reviews.



CHILD POLICY

Two children under 12 years shall be accommodated free of charge, on the fold-out sleeper couch, if accompanying and sharing a room with 2 full paying adults (subject to availability).

CREDIT CARDS

Master and Visa credit cards are welcome.

OWNERS

Taleni Africa Tourism Holdings (Pty) Ltd

GENERAL MANAGER

Karl-Heinz Oosthuizen

RESERVATIONS

Central Reservations Office

Tel: +27 21 930 4564

Fax: +27 21 914 9930

Email: reservations@desertcamp.com

Address: P.O. Box 5798, Tygervalley, 7536
Cape Town - South Africa

DIRECT DEPOSIT BANKING DETAILS

Bank: First National Bank
Branch Code: 281872 (FNB Business Branch)
Account Name: Taleni Africa t/a Sossusvlei Lodge
Account Number: 555 100 555 66

Enter the Booking Number on the deposit slip and fax confirmation of deposit to +27 21 914 9930.

TERMS AND CONDITIONS

Quoted rates may change without prior notice should government taxes, fuel prices and other fees increase drastically and unexpectedly. Please confirm all rates.

- All quoted rates are in Namibian Dollars and are inclusive of 15% VAT
- Rates, where stated, are nett and are non-commissionable.
- Rates are quoted per room per night.
- Meals taken at Sossusvlei Lodge can be added to the booking.
- Tariffs quoted are subject to change without prior notice.
- Private reservations will only be regarded as "confirmed" once the stipulated deposit has

been received.

- Taleni Africa reserves the right to release a reservation if the due deposit is not received in full by the stipulated deposit due date.

The following cancellation policy applies to all reservations:

Cancellation period: Cancellation fee

16 to 30 days prior to arrival: 50%

11 to 15 days prior to arrival: 75%

<10 days prior to arrival: 100%

Non-arrivals: 100%

Tour Operators should contact the Central Reservations Office regarding details of registration.

DESERT CAMP CONTACT DETAILS

Tel: +264 63 683 205

Fax: +264 63 683 206

E-mail: info@desertcamp.com

PO Box 6900, Ausspannplatz, Windhoek – Namibia

www.desertcamp.com

